

ITP's newest identification tool is here!

Bee Mite ID: Bee-associated Mite Genera of the World

ITP is pleased to announce the release of its latest identification tool, *Bee Mite ID: Bee-associated Mite Genera of the World*. Pollinating bees play an essential role in agriculture, and parasitic mites are known to be a factor in recent declines in bee pollinator populations. *Varroa destructor*, an introduced mite parasite and disease vector, has decimated colonies of the European honey bee, one of the most important agricultural pollinators in the world. Global trade in alternative pollinators increases the likelihood of moving mites, so there is a potential for more *Varroa*-style invasions. Biosecurity specialists and beekeepers need a tool to help them identify the mites of greatest concern to help prevent such invasions. *Bee Mite ID* enables users to identify the mite life stages that may be found on bees or in their nests and to distinguish harmful from non-harmful mites. The tool focuses on mites associated with important pollinators and includes components both specialists and non-specialists can use.



<http://idtools.org/id/mites/beemites>

Common mites found on adult bumblebees (genus *Bombus*) 1 of 3
Acariformes: Astigmata

mites on bee (lower magnification)
 All mites without magnification signs (e.g. "2x") are approximately to scale.

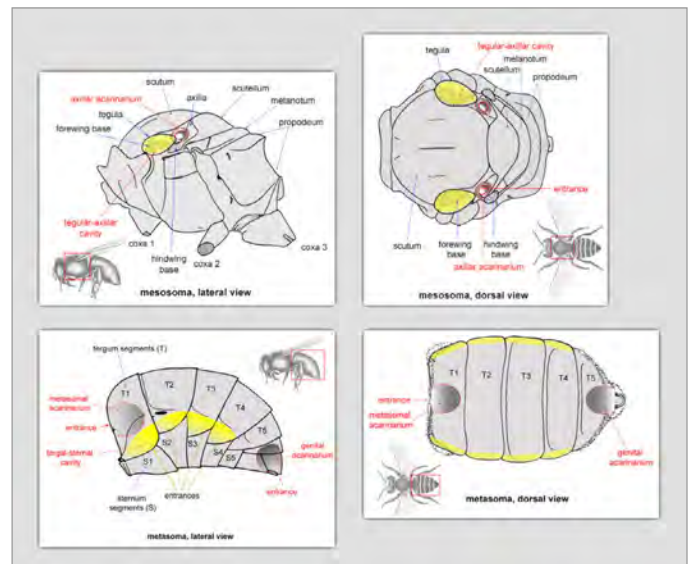
slide-mounted mites at higher magnification (can be distinguished by shape)

Bee Mite ID
<http://idtools.org/id/mites/beemites>

- associated exclusively with bees
- some life stages associated with bees, while others are not
- can complete entire life cycle without bees
- harmful to bee
- not harmful to bee
- unknown

Bee Mite ID includes:

- Quick reference guides for common bee pollinators
- Mite and bee morphology illustrations
- Filterable image gallery
- Searchable fact sheets
- Illustrated glossary of terms
- Lucid key that does not require Java
- Instructions on mounting and photographing mites



Morphology diagrams show bee body parts, indicating areas where mite hitchhikers may be found.

Quick reference guides for each of the seven major groups of bees used for pollination show mites in both low and high magnification organized by host.

Bee Mite ID is one of many identification tools and other identification support products produced by the USDA Identification Technology Program (ITP). Please visit <http://idtools.org> or email the ITP team in Fort Collins, CO at itp@usda.gov to learn more.